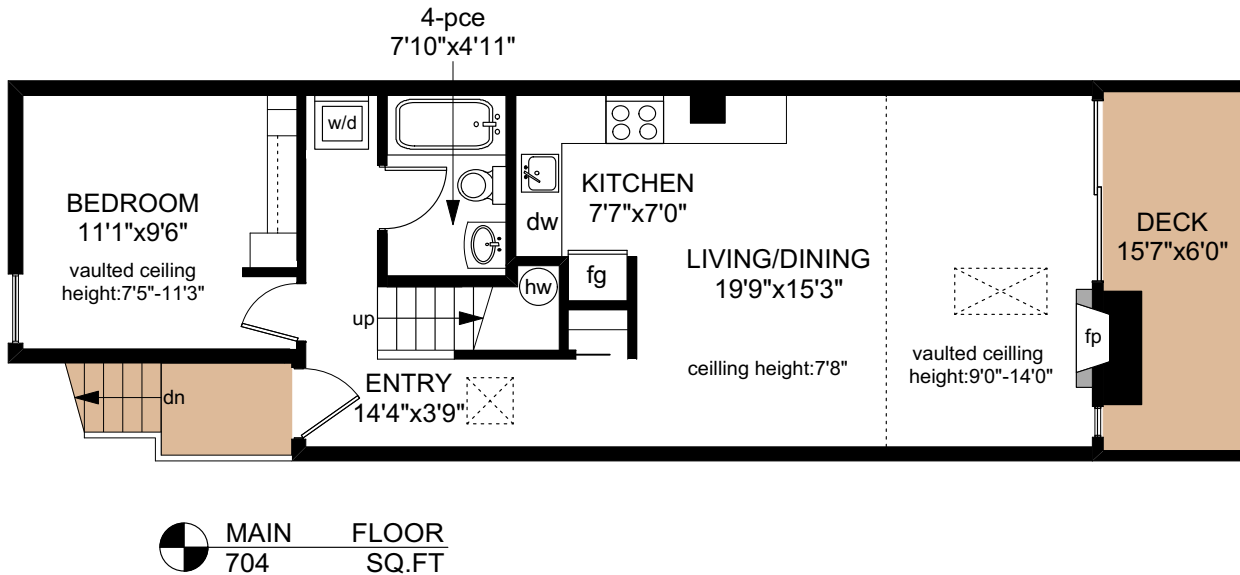
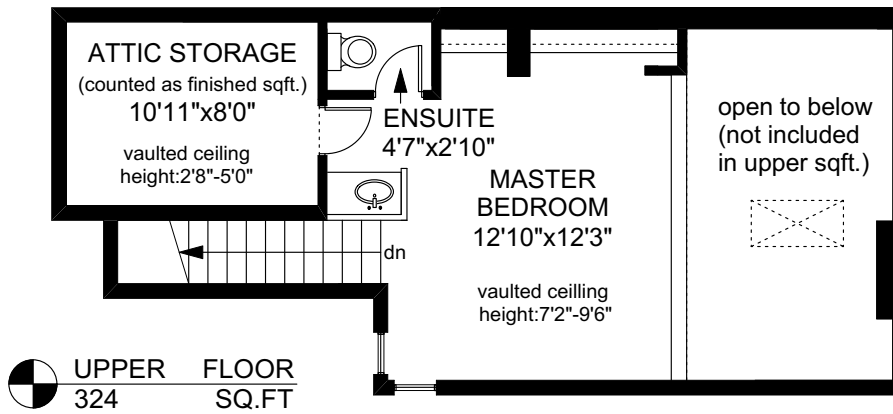
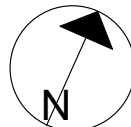


# 105 - 2341 HARBOUR ROAD



\*square footage totals shown are from the Strata Plan

	FINISHED SQ. FT.	UNFINISHED SQ. FT.	TOTAL SQ. FT.
MAIN	704	0	704
UPPER	324	0	324
TOTAL	1028	0	1028
DECK	0	86	86



PREPARED FOR THE EXCLUSIVE USE OF  
KAREN DINNIE-SMYTH  
PERSONAL REAL ESTATE CORPORATION  
AT RE/MAX CAMOSUN

MEASURED ON: 01/16/19  
DRAWING FILE: 17358

**Taf** Measure  
VICTORIA, B.C.  
Ph. 883.8894  
www.tafmeasure.com